

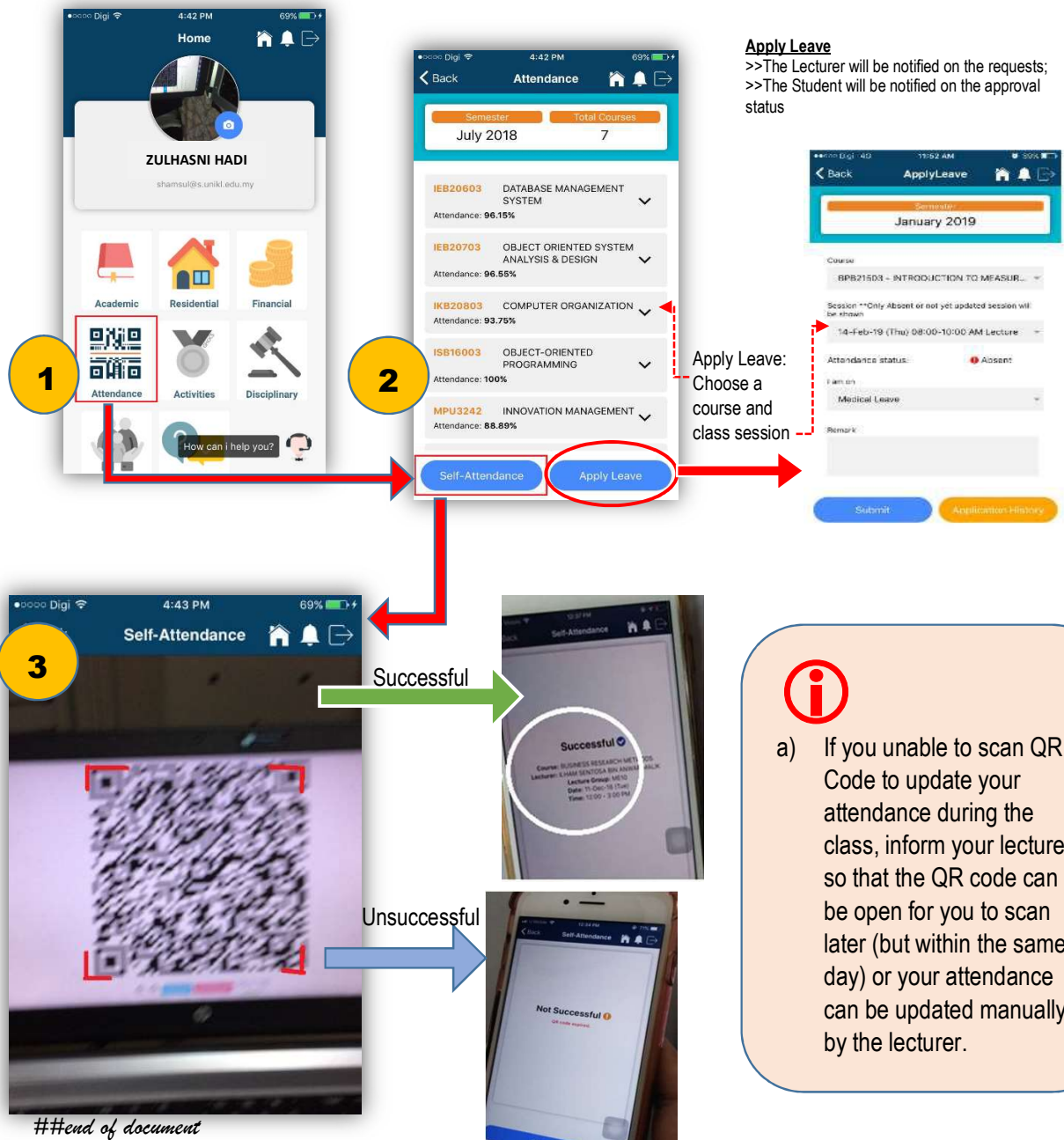


REQUIREMENT BEFORE CLASS SESSION

1. Download UniKL Link from Play Store (first time)
2. Login using UniKL email and password.

>>To get the email and password, refer to the guideline UniKL Link Login Guideline on the next page

SELF-TAKING ATTENDANCE & SUBMIT MEDICAL CERTIFICATE

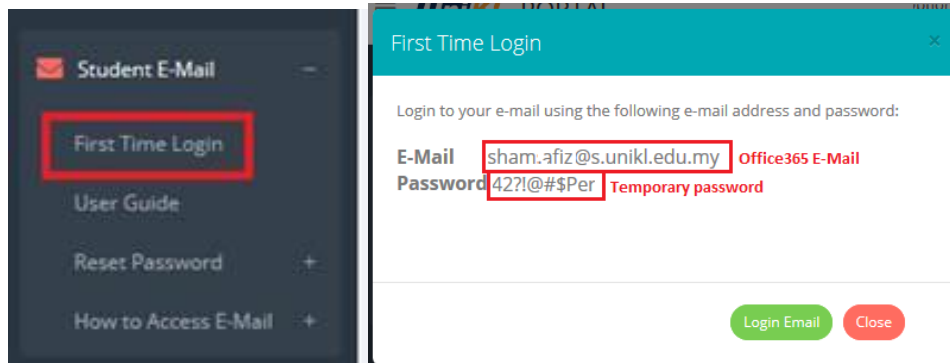






What is my username and password?

A. If you have never logged in to your e-mail on browser:

1. Retrieve your Office 365 e-mail and temporary password in UniKL Student Portal



2. Open <http://portal.microsoftonline.com> for first time login using temporary password **OR** click 
3. Enter your e-mail and temporary password.
4. You'll be prompted to change your password. Enter new password and click 



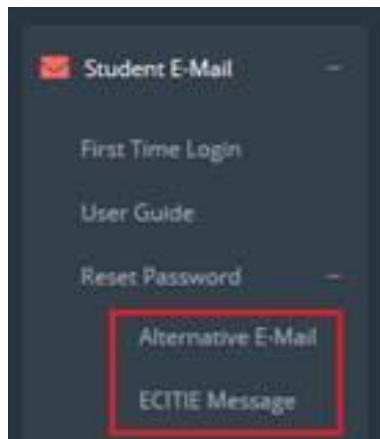
5. Use the **new password** to login UniKL Link.



Login Guideline [V1.0]

B. If you have logged in to your e-mail on browser previously:

You can reset your e-mail password and receive the new temporary password either through your alternative e-mail (Personal e-mail) or ECITIE message.



I still can't login UniKL Link after following the steps above:

Send an e-mail to helpdesk@unikl.edu.my for help. Please specify your **name**, **student ID**, and mention that you have followed the steps in the Guideline.